

PLEASE CHECK WWW.MOLEX.COM FOR LATEST PART INFORMATION

Part Number: [0357460110](#)
Status: **Active**
Overview: [versablade](#)
Description: Crimp Terminal 35746, 20-22 AWG

Documents:

Drawing (PDF)	Product Specification PS-35182-003 (PDF)
Product Specification PS-35150-001 (PDF)	Product Specification PS-35524-001 (PDF)
Product Specification PS-35180-002 (PDF)	RoHS Certificate of Compliance (PDF)
Product Specification PS-35180-003 (PDF)	

General

Product Family	Crimp Terminals
Series	35746
Crimp Quality Equipment	Yes
Overview	versablade
Product Name	VersaBlade™

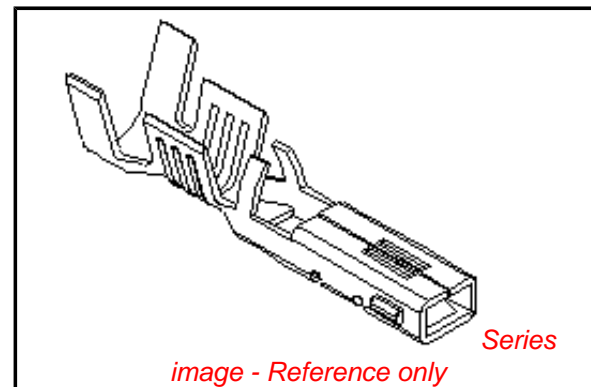
Physical

Gender	Female
Material - Metal	Phosphor Bronze
Material - Plating Mating	Tin
Material - Plating Termination	Tin
Packaging Type	Reel
Plating min: Mating (µin)	32.00
Plating min: Mating (µm)	0.800
Plating min: Termination (µin)	32.00
Plating min: Termination (µm)	0.80
Termination Interface: Style	Crimp or Compression
Wire Insulation Diameter	2.70mm (.106") max.
Wire Size AWG	20, 22
Wire Size mm²	N/A

Material Info

Reference - Drawing Numbers

Product Specification	PS-35150-001, PS-35180-002, PS-35180-003, PS-35182-003, PS-35524-001
Sales Drawing	SD-35746-001



EU RoHS

**ELV and RoHS
Compliant**
**REACH SVHC
Contains SVHC: No**
**Halogen-Free
Status**

China RoHS



**Need more information on product
environmental compliance?**

Email productcompliance@molex.com
 For a multiple part number RoHS Certificate of
 Compliance, [click here](#)

Please visit the [Contact Us](#) section for any
 non-product compliance questions.

Search Parts in this Series

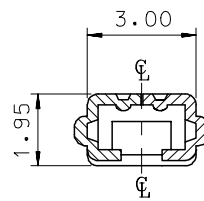
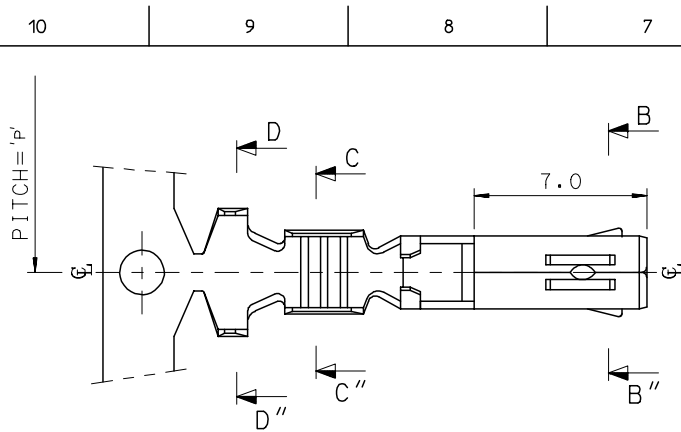
[35746Series](#)

Application Tooling | [FAQ](#)

*Tooling specifications and manuals are
 found by selecting the products below.
 Crimp Height Specifications are then
 contained in the Application Tooling
 Specification document.*

Global

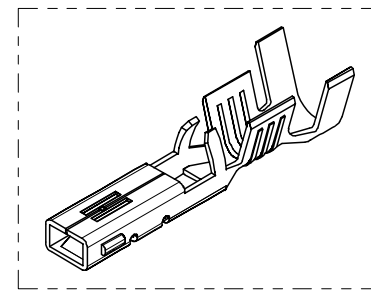
Description	Product #
T2 Terminator Die	0638529000
FineAdjust™ Applicator	0638629000



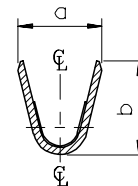
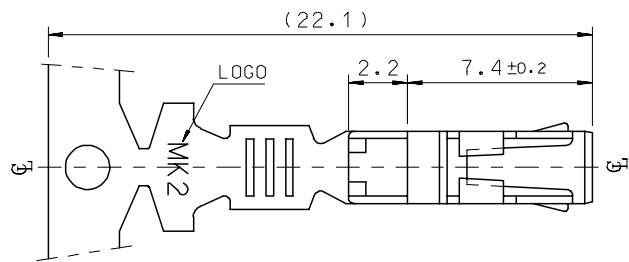
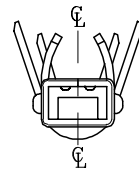
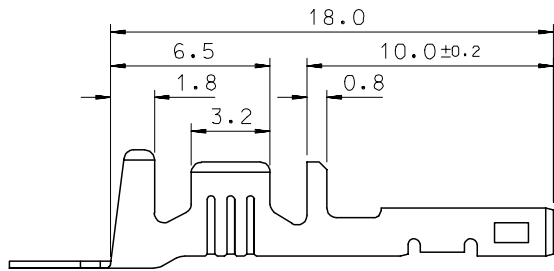
SEC' : B-B''

NOTES

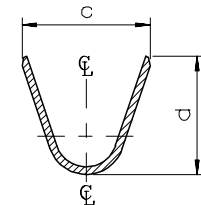
1. MATERIAL : PHOSPHOR BRONZE
0.3mm THICKNESS
2. FINISH : PRE-PLATED TIN
3. RECOMMENDED LENGTH OF WIRE STRIP IS 4.0-4.8mm.



ISOMETRIC VIEW



SEC' : C-C''



SEC' : D-D''

MATERIAL NO	ENG. No.	AWG	a	b	c	d	PITCH P
357460210	35746-0210	#18-#14	3.4	3.8	5.2	4.8	12.0
357460110	35746-0110	#22-#20	2.85	2.8	4.2	4.0	10.6
357460410	35746-0410	#24	2.2	1.75	3.85	3.5	10.6

REVISED	DESCRIPTION
EC NO: KOR2008-0087	
DRWN: JHPARK01 2007/11/15	
CHKD: WY. YANG 2007/11/15	
APPR: YUNSIKKIM 2007/11/15	

QUALITY SYMBOLS	DESCRIPTION
▽=0	
▽=0	

GENERAL TOLERANCES (UNLESS SPECIFIED)	mm	INCH
4 PLACES	± .05	± .002
3 PLACES	± .03	± .001
2 PLACES	± 0.3	± .012
1 PLACE	± 0.3	± .012
ANGULAR ± 1 °		
DRAFT WHERE APPLICABLE MUST REMAIN WITHIN DIMENSIONS		

DIMENSION STYLE		SCALE	DESIGN UNITS	THIRD ANGLE PROJECTION
MM ONLY		4:1	METRIC	
DRAWN BY	DATE	TITLE		
BK.CH01	1992/11/17	.070 FEMALE TERMINAL (A-TYPE)		
CHECKED BY	DATE			
BK.CH01	1992/11/17			
APPROVED BY	DATE			
CW.LEE	1992/11/17			
MATERIAL NO.	DOCUMENT NO.	SHEET NO.		
		1 OF 01		

MOLEX INCORPORATED	
SD-35746-001	
THIS DRAWING CONTAINS INFORMATION THAT IS PROPRIETARY TO MOLEX INCORPORATED AND SHOULD NOT BE USED WITHOUT WRITTEN PERMISSION	